



CAPITAL DRAGONS

Unit 28 – 999 Hilliard Street, Peterborough, Ontario K9 5R9

Phone: (705) 743-6472 Email: sheila@capitaldragons.com

Web Address: www.capitaldragons.com

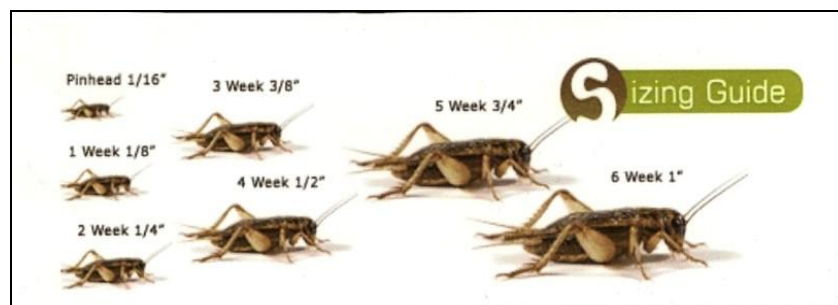
Canada's source for extreme
bearded dragon colour morphs.

FEEDER BUGS NUTRITIONAL ANALYSIS

	Crickets	Meal Worms	Wax Worms	Super Worms	Fly Larvae
Moisture, %	69.07	62.44	61.73	59.37	68.18
Fat, %	6.01	12.72	22.19	17.89	7.81
Protein, %	21.32	20.27	15.5	17.41	15.58
Fiber, %	3.2	1.73	7.69	6.8	3.46
Ash	2.17	1.57	1.02	1.2	1.4
Ca, ppm	345	133	283	124	874
P, ppm	4238	3345	2161	2320	2405
CA/P ratio %	0.081	0.04	0.131	0.053	0.363

FEEDING, SUPPLEMENT & BATH SCHEDULE

<u>Hatchling & Small Juvenile Dragons</u> (Birth to approx. 12 inches)	<u>Large Juvenile to Sub-Adult Dragons</u> (approx. 13 to 17 inches)	<u>Adult Dragons</u> (approx. 17 inches and up)
<p>Salad - Daily - Mon. to Sun.</p> <p>Crickets - 2 or 3 Feedings Daily</p>	<p>Salad - Daily - Mon. to Sun.</p> <p>Crickets - Mon., Wed., Fri. & Sun.</p> <p>Superworms - Tue., Thu., & Sat.</p>	<p>Salad - Daily - Mon. to Sun.</p> <p>Crickets - Mon. & Wed.</p> <p>Superworms - Fri. & Sun.</p>
<p>Rep Cal with D3 - 1 Feeding Daily</p> <p>Mon., Tue., Wed., Thur., Fri., Sat., Sun.</p>	<p>Rep Cal with D3 - on</p> <p>Mon. & Fri.</p>	<p>Rep Cal with D3 - on</p> <p>Mon. and Fri.</p>
<p>Herptivite – 2 Feedings Weekly</p> <p>Mon. & Fri.</p>	<p>Herptivite – 2 Feedings Weekly</p> <p>Tue. & Thu.</p>	<p>Herptivite – 2 Feedings Weekly</p> <p>Mon. & Fri.</p>
<p>Bath - Daily at End of Day Heat Light On Until Dry 1 Hr. Minimum</p>	<p>Bath - Tue. & Thu. Dry With Towel - Heat Light On 1 Hr. Minimum</p>	<p>Bath - Tue. & Thu. Dry With Towel - Heat Light On 1 Hr. Minimum.</p>





Canada's source for extreme
bearded dragon color morphs!

Bearded Dragon – Feeding Information

SALAD INGREDIENTS ...

Mustard Greens, Collard Greens, Turnip Greens, Bok Choy, Chicory Greens Zucchini, Clover, Bean Sprouts, Corn (cooked), Dandelion Greens, Beet Greens Sunflower Seedlings, Carrots (shredded), Peas, Red Tip Lettuce, Parsley, Beans, Purslane, Collards, Kale, Squash, Parsnip (shredded)

Spinach contains a large amount of oxalic acid, which binds with calcium, rendering the calcium unusable by the animal. Over time, this causes metabolic bone disease, with the body reabsorbing calcium from the bones to use for normal metabolic and cellular processes. Most of the dark greens contain oxalic acid but spinach contains the most. The high amount of oxalic acid may also cause gout over a period of time.....However, bok choy is a brassica, and can cause hypothyroidism, a thyroid deficiency, when fed in excess. Some is fine, but make sure they eat other greens as well.

WHAT ABOUT FLOWERS ...

Hibiscus, Mustard Flowers, Dandelion, Carnations, Ice Plant, Squash, Clover, Nasturtium, Daisy.

Dragons love their flowers and this is a main staple of them in the wild

FRUIT ...

Melon, Berries, Banana (only very occasionally as a treat - bananas are very high in Phosphorus), Grapes, Strawberry, Raspberry, Apple. Keep in mind that apples are an appetite suppressant, so should only be fed very sparingly.

When feeding any vegetable or fruit, always cut or shred it into small enough pieces.

Slice lettuce, collard greens etc. very thinly, shred carrot and chop up peas and cooked unsalted sweet corn.

You should feed fruit sparingly as although they may love it, fruit can cause very loose stools, which may aggravate the digestive system, cause stress and also may dehydrate them.